

# O.D.O.T. DISTRICT 2 SURVEY OFFICE (USE ONLY)

PERSONNEL \_\_\_\_\_ REFERENCE NO. 1 SHEET 1 OF 39  
 NOTES RHOADES DATE 6/11/13 ROUTE SR 224  
 H.C. ROUSOS WEATHER CLOUDY COUNTY SENECA  
 R.C. WESTFALL TEMP. 66° TOWNSHIP LOUDON  
 SECTION 31  
 T 2 N R 13 E

TYPE MONUMENT ROUND R.R. SPIKE MONBOX w/ 1" IPIN

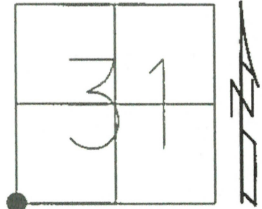
ON SURFACE - BELOW 10" ON

LEFT - Q PAV'T - RIGHT ON ✓

- TO - EDGE PAVEMENT

S.L.M. 0+00

Grid: Northing: 516064.480 Easting: 1714625.122



OCCS (SEN) : N: 284289.069 E: 89350.272

Δ = 0° 27' LT  
 FD R.R. SPIKE  
 11/26/63, EK  
 2/10/12, DCH  
 GPS, REF1

SET MAG/WASHER  
 GPS, REF1  
 5/21/14, EBW

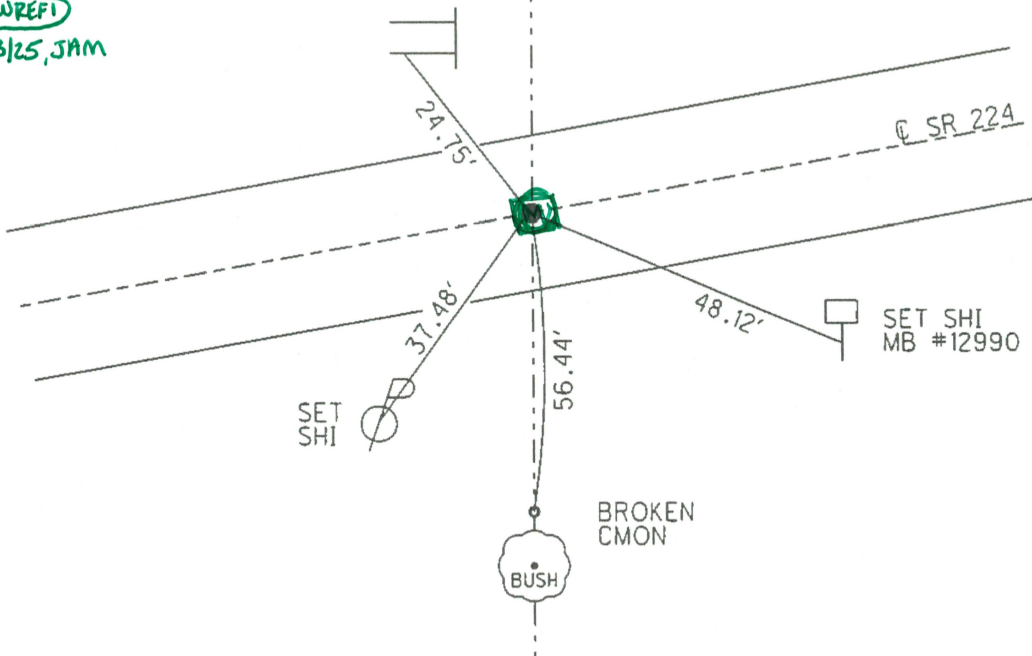
FD MONBOX w/ 1" IPIN

NEW REF1

8/13/25, JAM

2' UP  
 CO. LINE  
 SIGN POST

HANCOCK CO.  
 SENECA CO.



# O.D.O.T. DISTRICT 2 SURVEY OFFICE (USE ONLY)

PERSONNEL \_\_\_\_\_

REFERENCE NO. 1A → 1D

SHEET \_\_\_\_\_ OF \_\_\_\_\_

NOTES MILLER

DATE 4/22/25

ROUTE SR 224

H.C. \_\_\_\_\_

WEATHER SUNNY

COUNTY SENECA

R.C. \_\_\_\_\_

TEMP. 55°

TOWNSHIP LOUDON

DWG BY \_\_\_\_\_

PID 97425

SECTION 81

T 2 N R 13 E

TYPE MONUMENT MAG NAILS

ON SURFACE - BELOW \_\_\_\_\_ ON \_\_\_\_\_

OFFSET  $\frac{1}{2}$  PAVEMENT \_\_\_\_\_ LT : RT

\_\_\_\_\_ TO \_\_\_\_\_ EDGE PAVEMENT

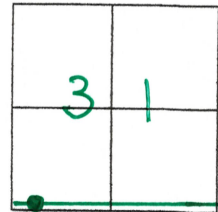
STATION: 6+25

HORIZ. DATUM: OLCS (SEN)

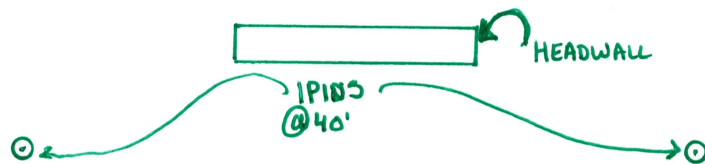
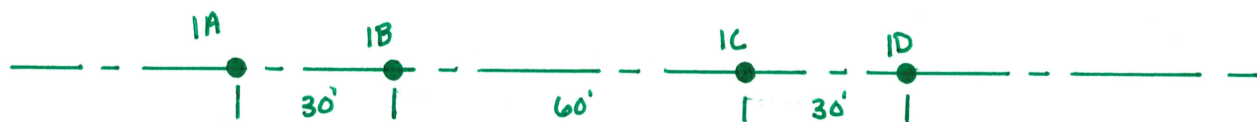
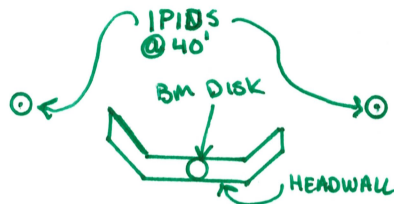
GEOID: 18

GRID: NORTHING: \_\_\_\_\_

EASTING: \_\_\_\_\_



NOTE: MAG NAILS INSTALLED  
W/ PROJECT 97425.



STA 6+25.00

1A

N: 284406.041

E: 89964.251

STA 6+55.00

1B

N: 284411.614

E: 89993.715

STA 7+15.00

1C

N: 284422.851

E: 90052.619

STA 7+45.00

1D

N: 284428.472

E: 90082.137

# O.D.O.T. DISTRICT 2 SURVEY OFFICE (USE ONLY)

PERSONNEL \_\_\_\_\_ REFERENCE NO. 2 SHEET 2 OF 39  
 NOTES RHOADES DATE 6/11/13 ROUTE SR 224  
 H.C. ROUSOS WEATHER CLOUDY COUNTY SENECA  
 R.C. WESTFALL TEMP. 66° TOWNSHIP LOUDON  
 SECTION 31  
 T 2 N R 13 E

TYPE MONUMENT P.K./WASHER ROUND MONBOX

ON SURFACE - BELOW 4" ON

LEFT - C PAV'T - RIGHT 0.6' ?

- TO - EDGE PAVEMENT

S.L.M. 20+01.44

Grid: Northing: 516424.377 Easting: 1716593.993

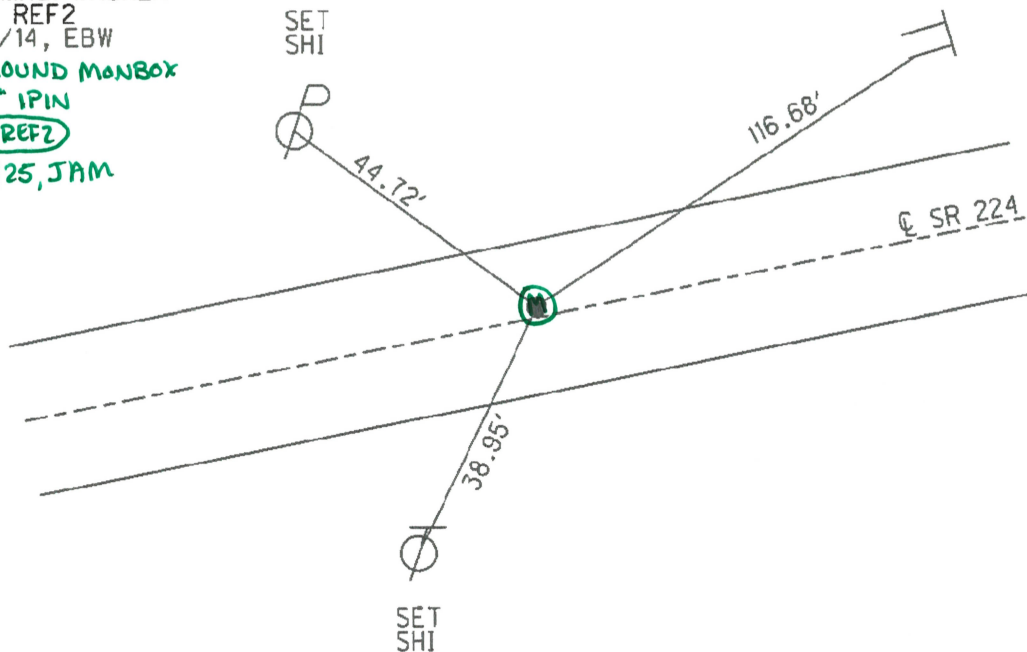
OCES (SEN): N: 284680.011

E: 91403.054

RECORD: P.O.T.  
 FD R.R. SPIKE  
 11/26/63, EK  
 2/10/12, DCH  
 GPS, REF2

SET MAG/WASHER  
 GPS, REF2  
 5/21/14, EBW  
FD ROUND MONBOX  
W/ 1" IPIN  
NEWREF2  
8/13/25, JAM

1.5' UP  
 SET NOTCH  
 SIGN POST

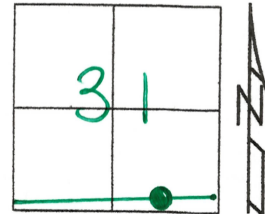


O.D.O.T. DISTRICT 2 SURVEY OFFICE (USE ONLY)

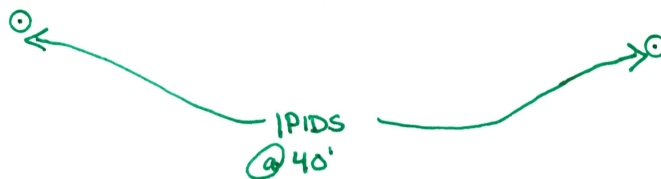
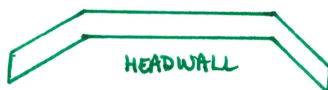
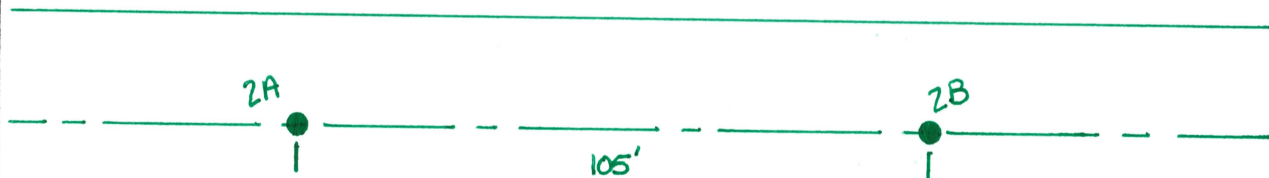
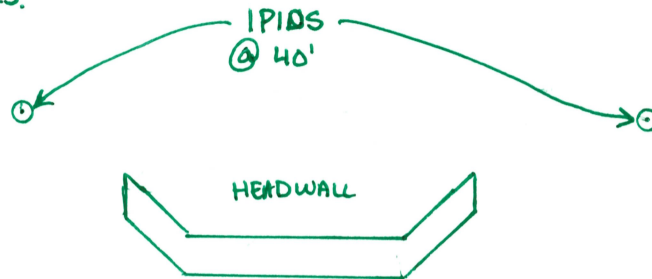
PERSONNEL \_\_\_\_\_ REFERENCE NO. 2A + 2B SHEET \_\_\_\_\_ OF \_\_\_\_\_  
 NOTES MILLER DATE 4/22/25 ROUTE SR 224  
 H.C. \_\_\_\_\_ WEATHER SUNNY COUNTY SENECA  
 R.C. \_\_\_\_\_ TEMP. 55° TOWNSHIP LOUDON  
 DWG BY \_\_\_\_\_ PID 97425 SECTION 31  
 T 2 N R 13 E

TYPE MONUMENT MAG NAILS  
 ON SURFACE - ~~BELOW~~ ON \_\_\_\_\_  
 OFFSET  $\odot$  PAVEMENT \_\_\_\_\_ LT : RT \_\_\_\_\_  
 \_\_\_\_\_ TO \_\_\_\_\_ EDGE PAVEMENT  
 STATION: \_\_\_\_\_

HORIZ.DATUM: OCCS (SEN) GEOID: 18  
 GRID: NORTHING: \_\_\_\_\_ EASTING: \_\_\_\_\_



NOTE: MAG NAILS INSTALLED  
 W/ PROJECT 97425.



STA 33+86.00  
2A  
 N: 284922.255  
 E: 92675.247

STA 34+90.00  
2B  
 N: 284941.880  
 E: 92778.374



O.D.O.T. DISTRICT 2 SURVEY OFFICE (USE ONLY)

PERSONNEL

REFERENCE NO. 2C

SHEET \_\_\_\_ OF \_\_\_\_

NOTES MILLER

DATE 8/18/25

ROUTE SR 224

H.C. \_\_\_\_\_

WEATHER HUMID/SUNNY

COUNTY SENECA

R.C. \_\_\_\_\_

TEMP. 76°

TOWNSHIP LODON

SECTION 31

DWG BY \_\_\_\_\_ PID 97425

T 2 N R 13 E

TYPE MONUMENT ROUND MONBOX W/ 1" IPIN

ON SURFACE - ~~BELOW~~ \_\_\_\_\_ ON \_\_\_\_\_

OFFSET  $\varnothing$  PAVEMENT \_\_\_\_\_ LT : RT

\_\_\_\_\_ TO \_\_\_\_\_ EDGE PAVEMENT

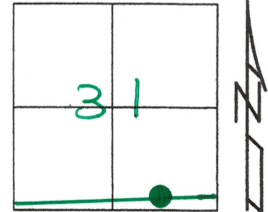
STATION: 39+56.58

HORIZ. DATUM: ALCS (SEN)

GEOID: 18

GRID: NORTHING: 285029.113

EASTING: 93236.747



NOTE: ROUND MONBOX  
INSTALLED W/ PROJECT  
97425.

NOTE: THIS POINT IS P.C.  
P.I. IS LOCATED WITHIN TRACKS.

P.I. STA 41+56.13

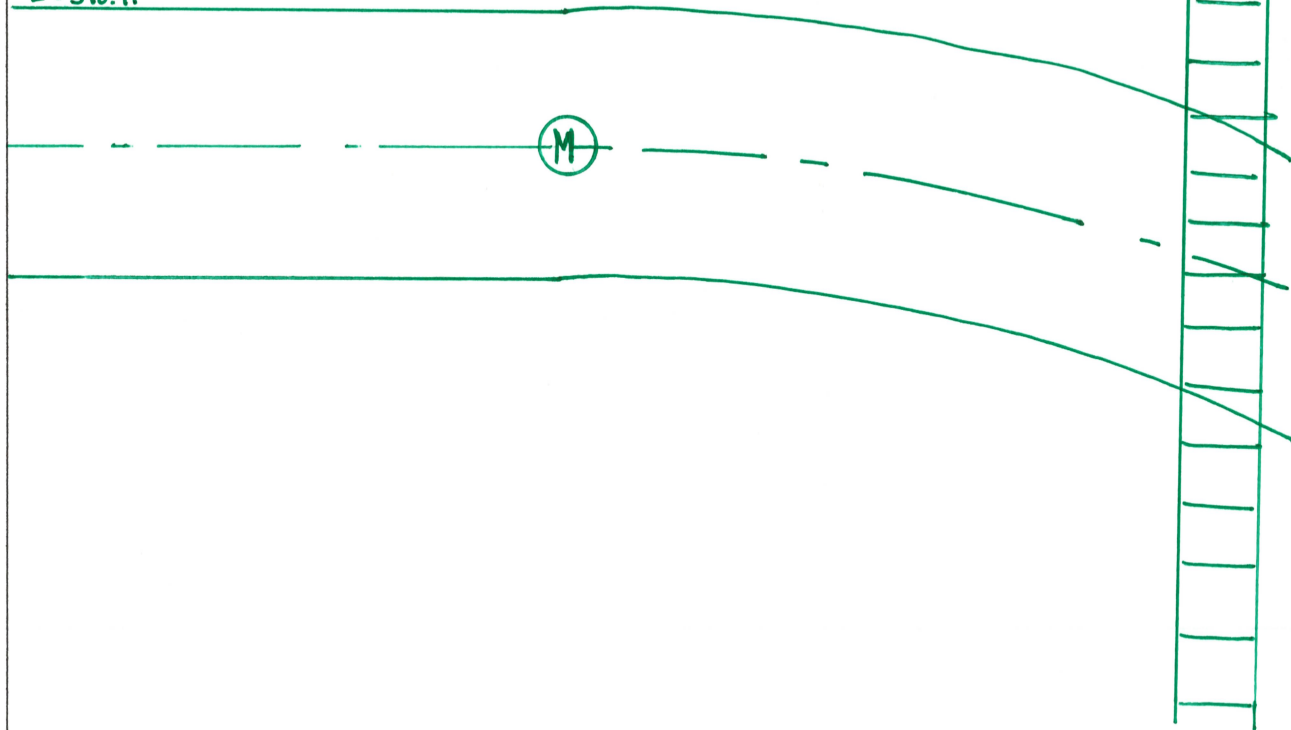
$\Delta$  : 5°54'10" RT

$D_c$  : 1°28'47"

$R$  : 3871.98'

$T$  : 199.63'

$L$  : 398.91'



O.D.O.T. DISTRICT 2 SURVEY OFFICE (USE ONLY)

PERSONNEL \_\_\_\_\_ REFERENCE NO. 3A SHEET \_\_\_\_\_ OF \_\_\_\_\_  
NOTES MILLER DATE 8/13/25 ROUTE SR  
H.C. \_\_\_\_\_ WEATHER HUMID/SUNNY COUNTY SENECA  
R.C. \_\_\_\_\_ TEMP. 76° TOWNSHIP LOUDON  
DWG BY \_\_\_\_\_ PID 97425 SECTION 31  
T 2 N R 13 E

TYPE MONUMENT ROUND MONBOX W/ 1" PIN

ON SURFACE - ~~BELOW~~ ON \_\_\_\_\_

OFFSET  $\varnothing$  PAVEMENT \_\_\_\_\_ LT : RT

\_\_\_\_\_ TO \_\_\_\_\_ EDGE PAVEMENT

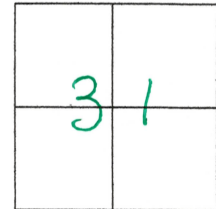
STATION: 43+55.41

HORZ. DATUM: OCCS (SEN)

GEOID: 18

GRID: NORTHING: 285083.493

EASTING: 93631.726



NOTE: ROUND MONBOX INSTALLED W/ PROJECT 97425.

P.I. STA 41+56.13

$\Delta = 5^{\circ}54'10''$  RT

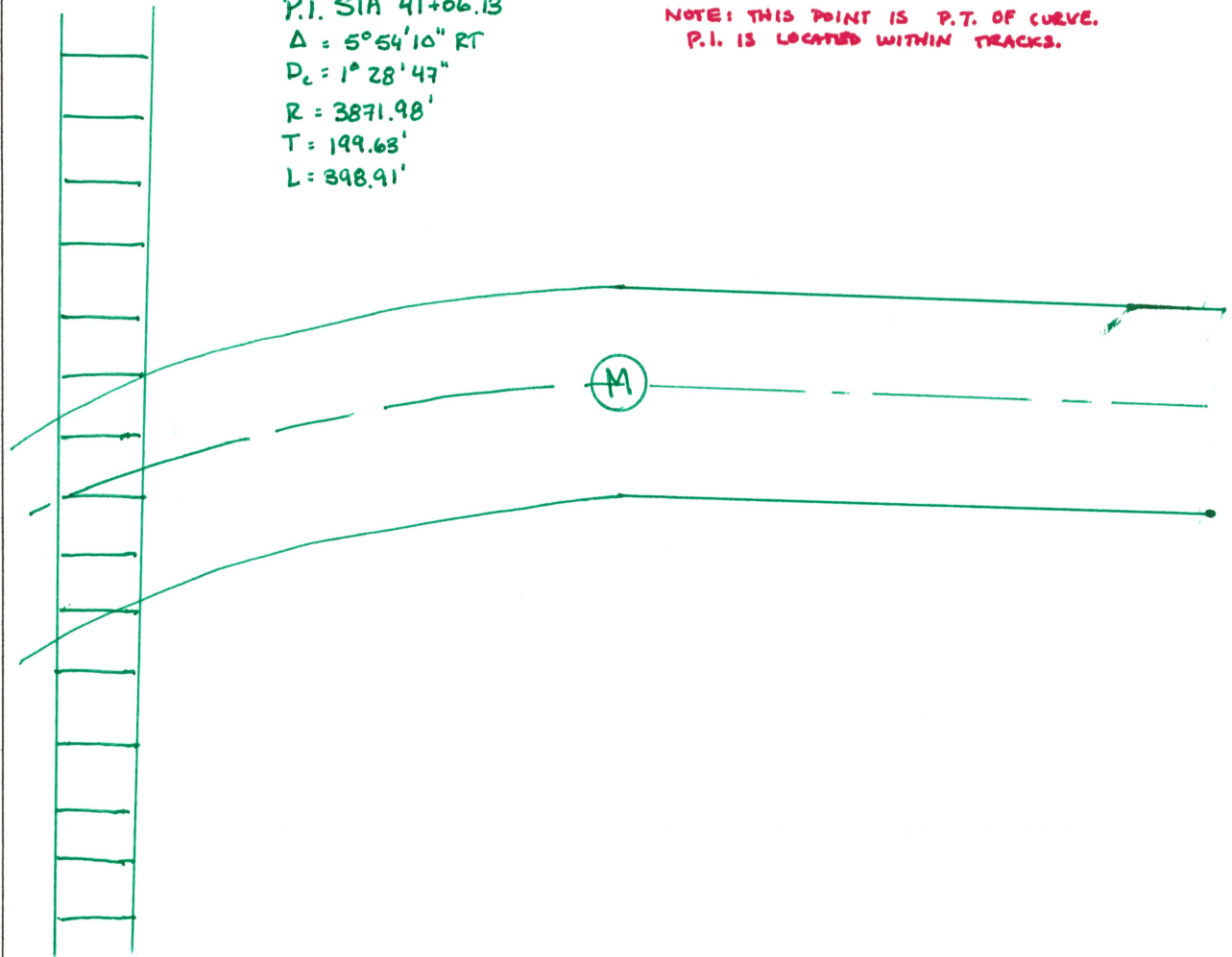
$P_c = 1^{\circ}28'47''$

$R = 3871.98'$

$T = 199.63'$

$L = 398.91'$

NOTE: THIS POINT IS P.T. OF CURVE.  
P.I. IS LOCATED WITHIN TRACKS.



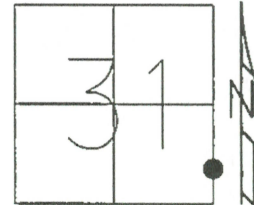
# O.D.O.T. DISTRICT 2 SURVEY OFFICE (USE ONLY)

PERSONNEL \_\_\_\_\_ REFERENCE NO. 5 SHEET 4 OF 39

NOTES RHOADES DATE 6/11/13 ROUTE SR 224  
H.C. ROUSOS WEATHER CLOUDY COUNTY SENECA  
R.C. WESTFALL TEMP. 66° TOWNSHIP LOUDON  
SECTION 31  
T 2 N R 13 E

TYPE MONUMENT P.K./WASHER  
ON SURFACE - ~~BELOW~~ ON \_\_\_\_\_  
~~LEFT~~ - Q PAV'T - RIGHT 4.5'  
- TO - EDGE PAVEMENT  
S.L.M. 55+19.91

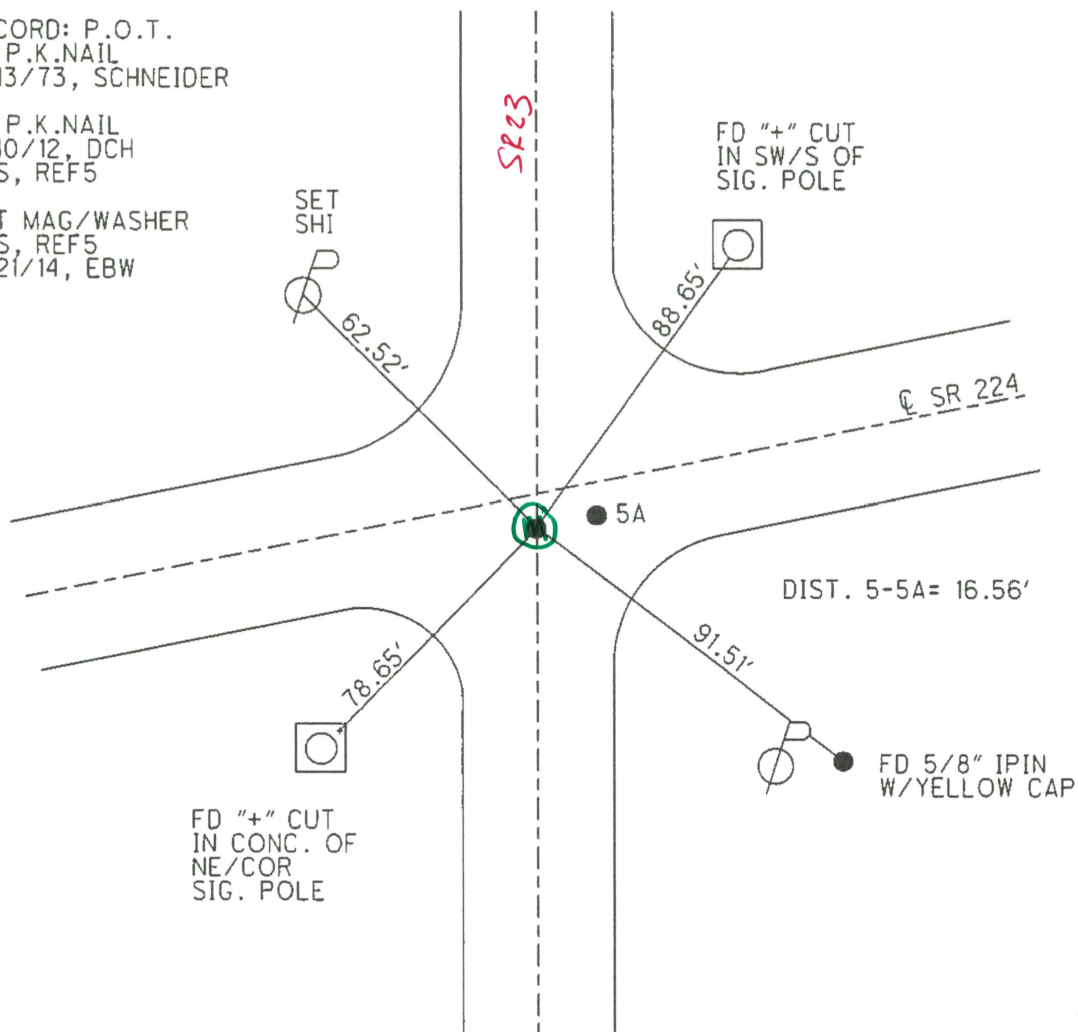
Grid: Northing: 516917.099 Easting: 1720073.236



RECORD: P.O.T.  
FD P.K.NAIL  
3/13/73, SCHNEIDER

FD P.K.NAIL  
2/10/12, DCH  
GPS, REF5

SET MAG/WASHER  
GPS, REF5  
5/21/14, EBW



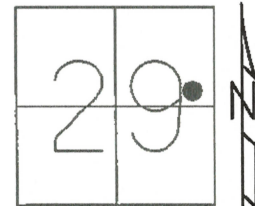
NOTE: FD MONBOX INSTALLED W/ PROJECT 97425

O.D.O.T. DISTRICT 2 SURVEY OFFICE (USE ONLY)

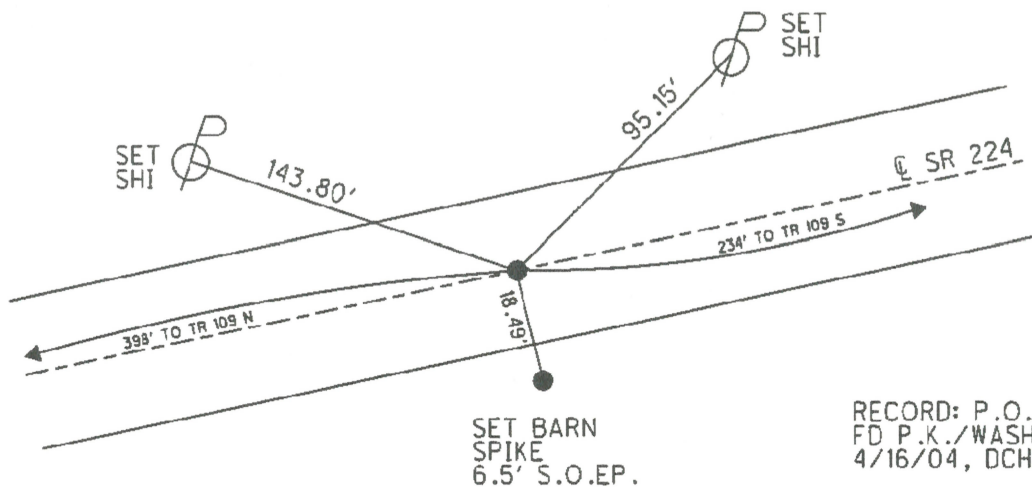
PERSONNEL \_\_\_\_\_ REFERENCE NO. 30 SHEET 32 OF 39  
NOTES HOMAN DATE 6/7/13 ROUTE SR 224  
H.C. HOMAN WEATHER CLOUDY COUNTY SENECA  
R.C. ROUSOS TEMP. 55° TOWNSHIP HOPEWELL  
SECTION 29  
T 2 N R 14 E

TYPE MONUMENT MAG NAIL  
ON SURFACE - ~~BELOW~~ ON \_\_\_\_\_  
LEFT - Q PAV'T - ~~RIGHT~~ 0.5'  
12.3' TO LT EDGE PAVEMENT  
S.L.M. ~~431+14~~ 431+06.70

Grid: Northing: 523876.512 Easting: 1757020.150



NOTE: <sup>^</sup>INSTALLED w/ PROJECT 97425  
MONBOX



RECORD: P.O.T.  
FD P.K./WASHER  
4/16/04, DCH  
SET MAG/WASHER  
7/1/04, RGN  
FD MAG NAIL  
2/10/12, DCH  
SET MAG/WASHER  
10/25/13, RGN  
GPS, NEWREF30  
7/23/14, JMR

New monBox?



# O.D.O.T. DISTRICT 2 SURVEY OFFICE (USE ONLY)

PERSONNEL \_\_\_\_\_ REFERENCE NO. 31 SHEET 33 OF 39

NOTES HOMAN MILLER DATE 6/7/13 4/22/25 ROUTE SR 224

H.C. HOMAN MILLER WEATHER CLOUDY SUNNY COUNTY SENECA

R.C. ROUSOS BARRIERE TEMP. -60° 65° TOWNSHIP HOPEWELL

SECTION 28

T 2 N R 14 E

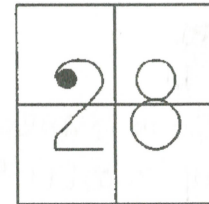
TYPE MONUMENT MAG NAIL W/ WASHER

ON SURFACE - ~~BELOW~~ ON ✓

LEFT - Q PAV'T - RIGHT ON ✓

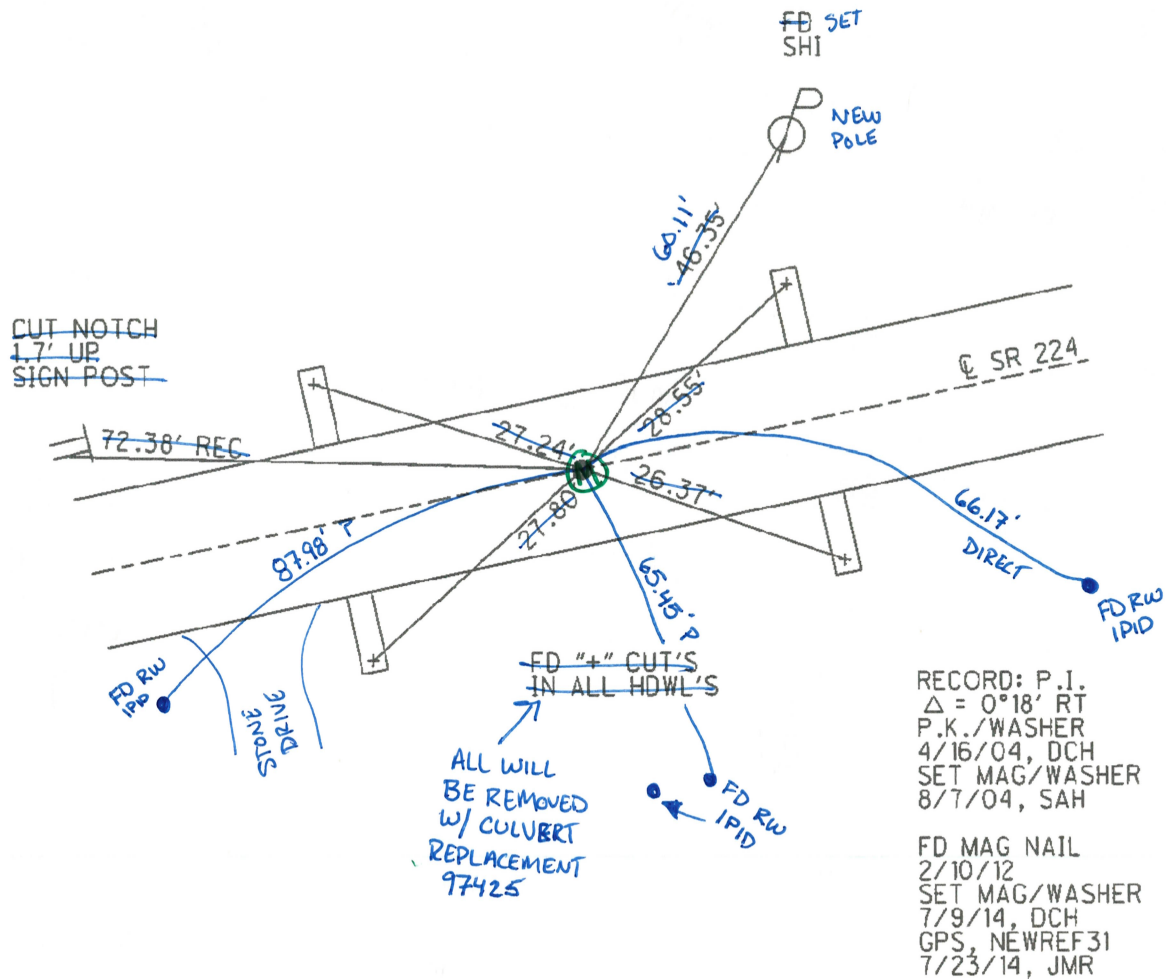
12.7' TO RT EDGE PAVEMENT

S.L.M. 447+08 447+02.31



Grid: Northing: 524167.824 Easting: 1758588.523

NOTE: MONBOX INSTALLED W/ PROJECT 97425



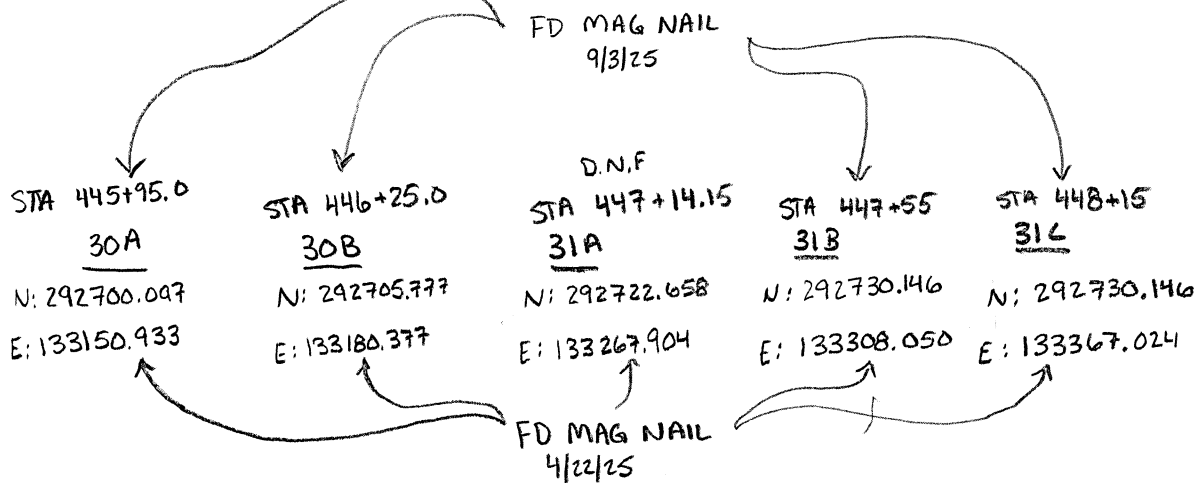
NEW MONBOX?

SEE BACK FOR NEW SKETCH

NOTES: MILLER  
HC :  
RC :

DATE: 9/3/25  
WEATHER: SUNNY  
TEMP: 65°

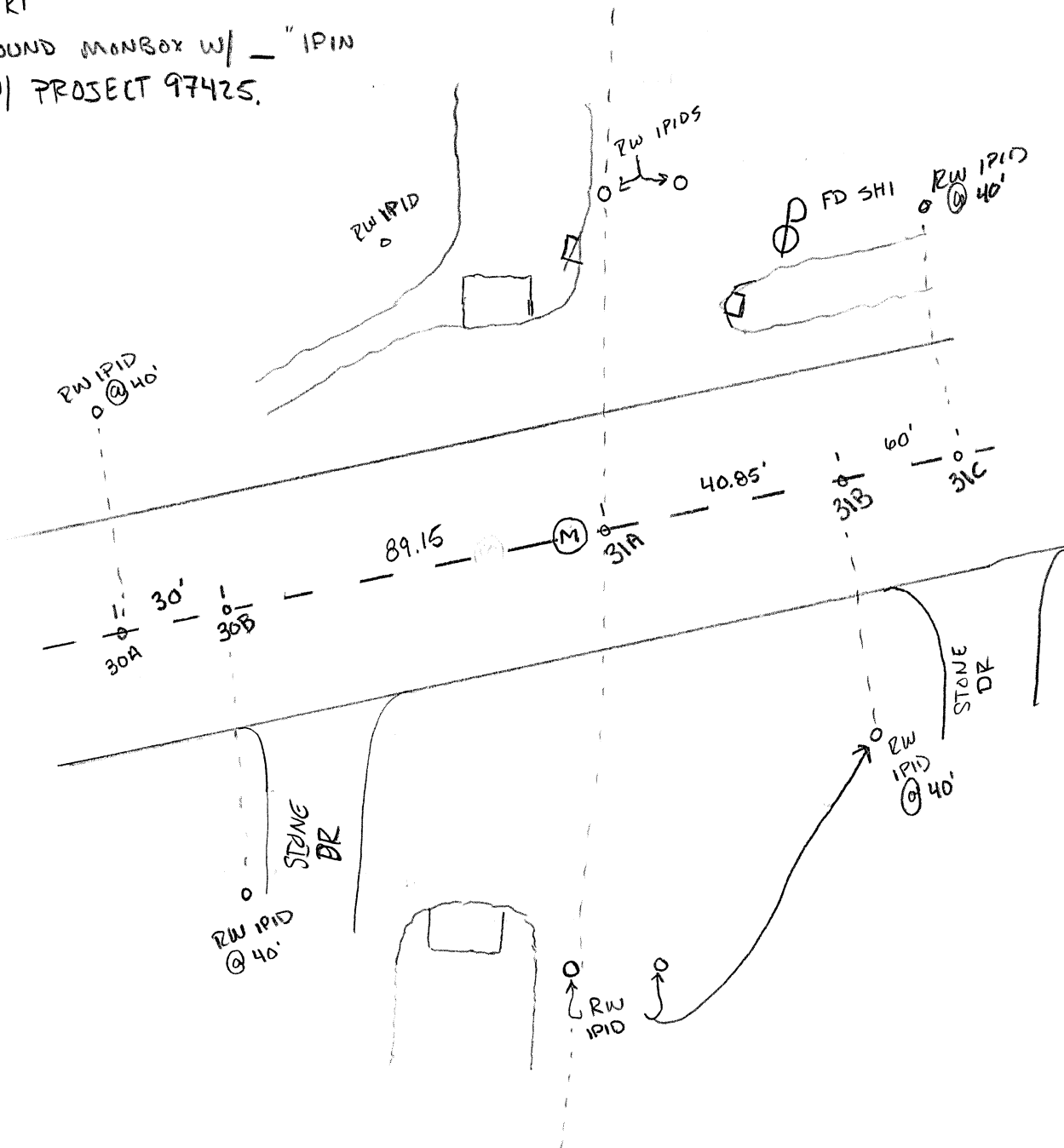
ROUTE: US 224  
COUNTY: SENECA  
TOWNSHIP: HOPEWELL  
SECTION: 28



RECORD: PI

$\Delta = 0^{\circ}18''$  RT

NOTE: ROUND MONBOX W/ — " IPIN  
SET W/ PROJECT 97425.

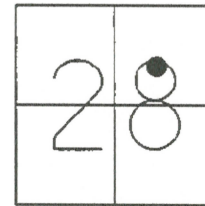


\* NOT TO SCALE!

# O.D.O.T. DISTRICT 2 SURVEY OFFICE (USE ONLY)

PERSONNEL	REFERENCE NO.	32	SHEET	34	OF	39
NOTES	HOMAN	DATE	6/7/13	ROUTE	SR 224	
H.C.	HOMAN	WEATHER	CLOUDY	COUNTY	SENECA	
R.C.	ROUSOS	TEMP.	60°	TOWNSHIP	HOPEWELL	
				SECTION	28	
				T	2	N
				R	14	E

TYPE MONUMENT MAGWASHER  
 ON SURFACE - ~~BELOW~~ ON  
~~LEFT~~ - C PAV'T - RIGHT 0.5'  
12.7' TO RT EDGE PAVEMENT  
 S.L.M. 466+20 466+07.90

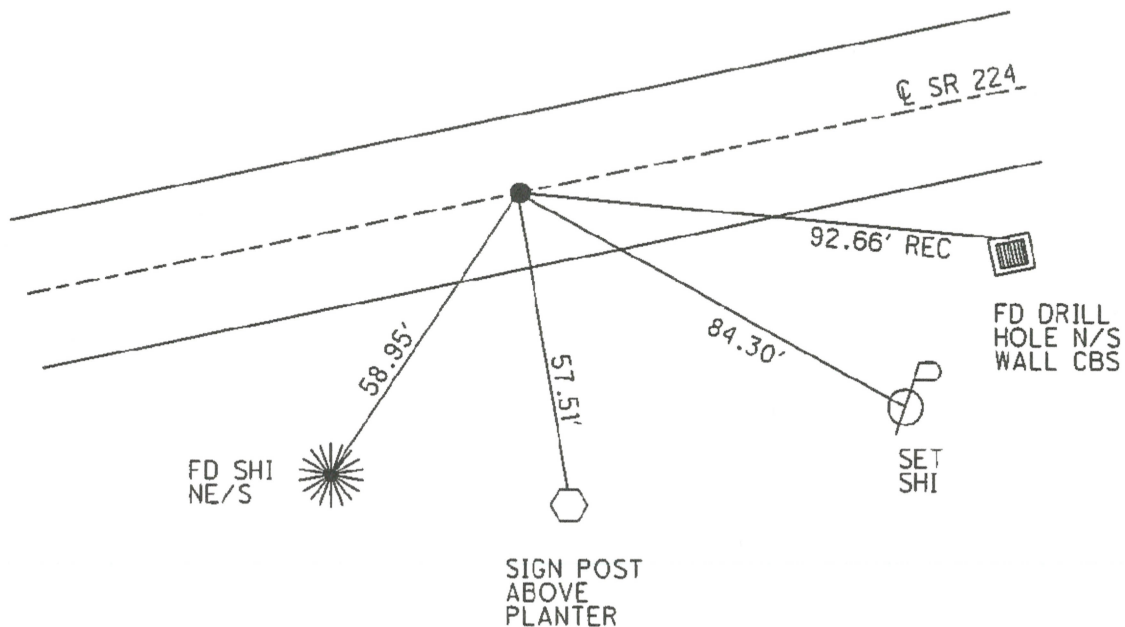


Grid: Northing: 524505.015 Easting: 1760464.012

*NOTE: MonBox INSTALLED w/ PROJECT 97425*

RECORD: P.I.  
 $\Delta = 0^{\circ} 01' RT$   
 P.K./WASHER  
 4/23/04, DCH  
 SET MAG/WASHER  
 7/1/04, RGN

FD MAG/WASHER  
 2/10/12  
 SET MAG/WASHER  
 7/9/14, DCH  
 GPS, NEWREF32  
 7/23/14, JMR



*NEW MonBox?*